



PTFE BELLOWS PULSATION DAMPER

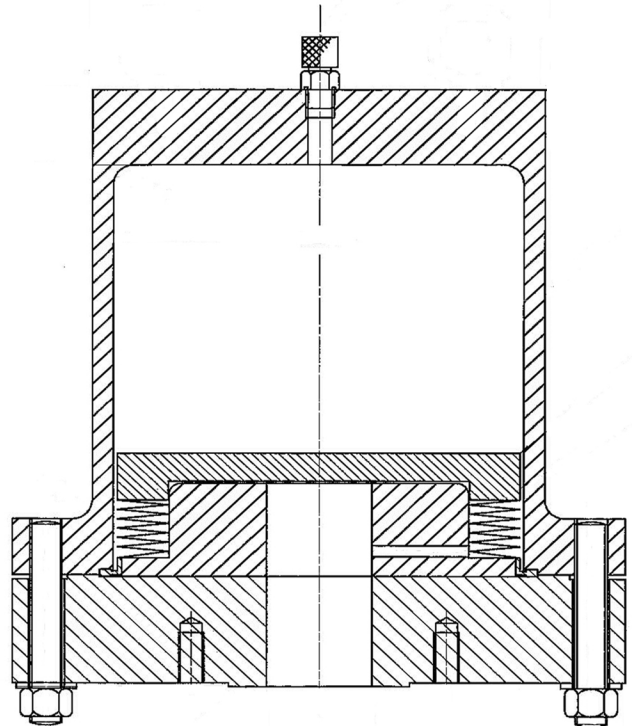
FB-Type A

FB Series

Shell Material : 316 Stainless Steel, Carbon Steel, Titanium, Hastelloy C, Monel 400

Documentation : Standard Certification to DIN 50049 3.1b

Model Ref.	Volume (litres)	Pressure (bar)	Connection NPT female	Diameter (mm)	Length (mm)	Weight (Kg)
FB 05	0.05	40	1/2"	116	145	11
FB 10	0.1	40	1/2"	130	150	14
FB 20	0.25	40	1/2"	140	175	18
FB 30	0.5	40	1"	165	180	23
FB 40	1.0	40	1 1/2"	200	205	37
FB 50	2.0	40	1 1/2"	228	240	53
FB 60	5.0	40	2"	279	295	63
FB 70	} Contact Flowguard USA for details.					
FB 80						



Pressures are calculated in accordance with PD 5500 and are based on 316 Stainless steel wetted parts and carbon steel shell at a design temperature of 50° C. The limiting pressure is the maximum precharge pressure which the PTFE bellows will withstand at 50° C. If the operating temperature is higher than this, then the maximum precharge decreases.

The shell material is carbon steel as a standard but can be 316 Stainless steel or polypropylene (depending on pressure) as an option. The base flange is and the bellows element are the only wetted parts.

Bellows Elements

Standard material is PTFE with 316 Stainless steel options.

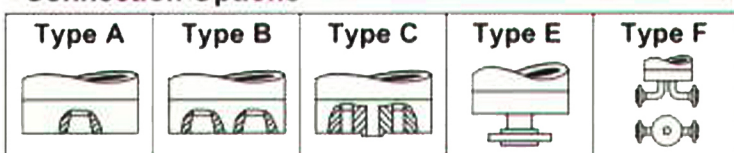
The full Flowguard Range includes models DP, DS, FB, FB/TD, FG, VG, FG/TD, & HG and can cover the following parameters:

Maximum Volume: 2000 litre

Maximum Pressure: 1050 bar

Connections: Single & Twin, Threaded, or Welded Flanged

Connection Options



FLOWGUARD USA

3433 N. SAM HOUSTON PKWY WEST
SUITE 400

HOUSTON, TX 77086

flowguard@flowguardusa.com

Tel. : (713) 673-5186 Toll: (800) 566-7857